



Please ask for Rachel Appleyard  
Direct Line: 01246 34 5277  
Fax: 01246 345252  
Email: [committee.services@chesterfield.gov.uk](mailto:committee.services@chesterfield.gov.uk)

The Chair and Members of Cabinet

Dear Councillor,

**AGENDA SUPPLEMENT**

Please see attached the documents for the agenda item listed below for the meeting of the CABINET to be held on TUESDAY, 14 JULY 2020, the agenda for which has already been published.

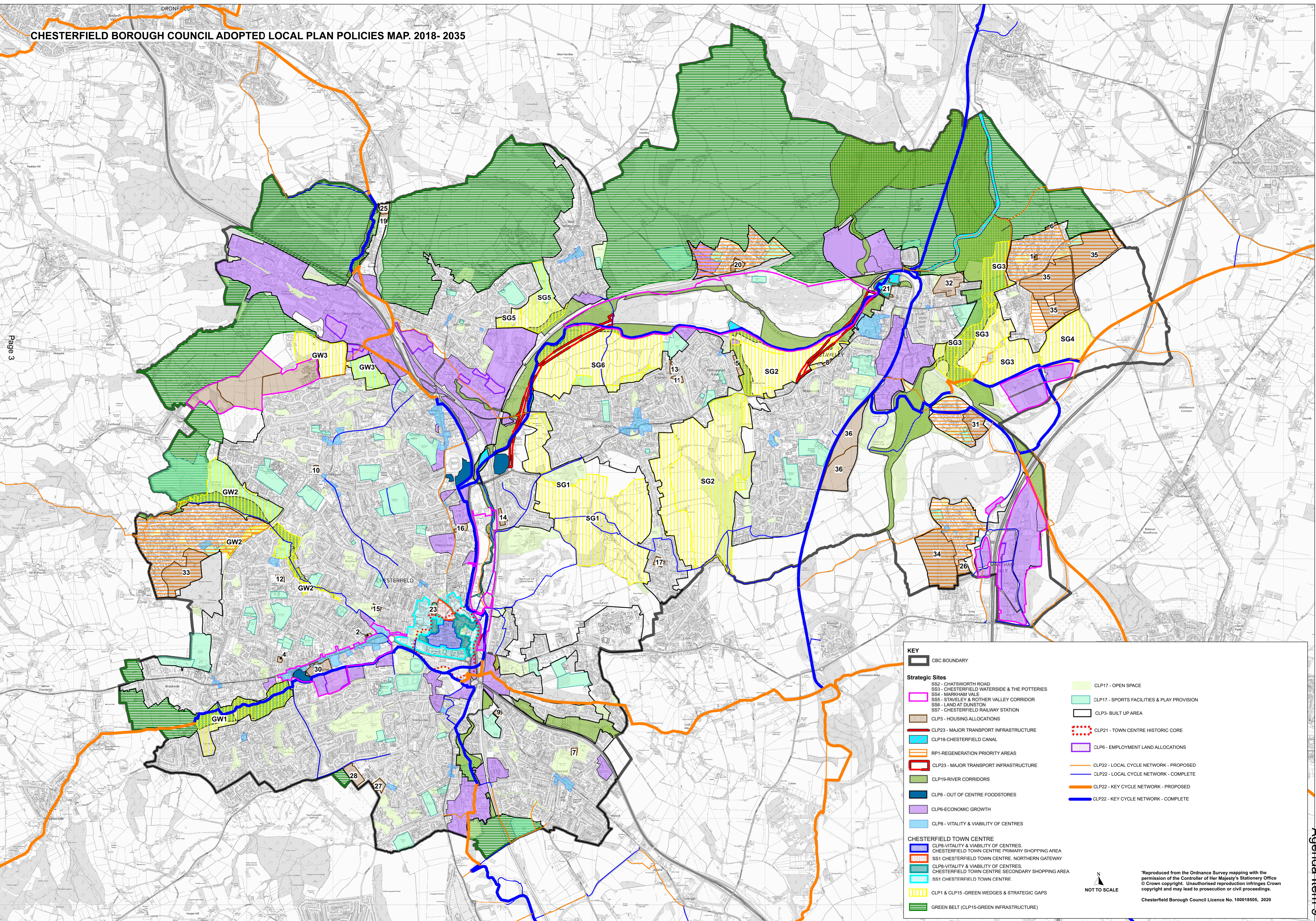
9. Chesterfield Borough Local Plan (Pages 3 - 4)

Yours sincerely,

Local Government and Regulatory Law Manager and Monitoring Officer

This page is intentionally left blank





**KEY**

- CBC BOUNDARY

**Strategic Sites**

- SS2 - CHATSWORTH ROAD
- SS3 - CHESTERFIELD WATERSIDE & THE POTTERIES
- SS4 - MARKHAM VALE
- SS5 - STAVELEY & ROTHER VALLEY CORRIDOR
- SS6 - LAND AT DUNSTON
- SS7 - CHESTERFIELD RAILWAY STATION
- CLP3 - HOUSING ALLOCATIONS
- CLP23 - MAJOR TRANSPORT INFRASTRUCTURE
- CLP18 - CHESTERFIELD CANAL
- RP1 - REGENERATION PRIORITY AREAS
- CLP23 - MAJOR TRANSPORT INFRASTRUCTURE
- CLP19 - RIVER CORRIDORS
- CLP8 - OUT OF CENTRE FOODSTORES
- CLP6 - ECONOMIC GROWTH
- CLP8 - VITALITY & VIABILITY OF CENTRES

**CHESTERFIELD TOWN CENTRE**

- CLP8 - VITALITY & VIABILITY OF CENTRES
- CHESTERFIELD TOWN CENTRE PRIMARY SHOPPING AREA
- SS1 CHESTERFIELD TOWN CENTRE, NORTHERN GATEWAY
- CLP8 - VITALITY & VIABILITY OF CENTRES
- CHESTERFIELD TOWN CENTRE SECONDARY SHOPPING AREA
- SS1 CHESTERFIELD TOWN CENTRE
- CLP1 & CLP15 - GREEN WEDGES & STRATEGIC GAPS
- GREEN BELT (CLP15 - GREEN INFRASTRUCTURE)

- CLP17 - OPEN SPACE
- CLP17 - SPORTS FACILITIES & PLAY PROVISION
- CLP3 - BUILT UP AREA
- CLP21 - TOWN CENTRE HISTORIC CORE
- CLP6 - EMPLOYMENT LAND ALLOCATIONS
- CLP22 - LOCAL CYCLE NETWORK - PROPOSED
- CLP22 - LOCAL CYCLE NETWORK - COMPLETE
- CLP22 - KEY CYCLE NETWORK - PROPOSED
- CLP22 - KEY CYCLE NETWORK - COMPLETE

NOT TO SCALE

Reproduced from the Ordnance Survey mapping with the permission of the Controller of Her Majesty's Stationery Office © Crown copyright. Unauthorised reproduction infringes Crown copyright and may lead to prosecution or civil proceedings. Chesterfield Borough Council Licence No. 100018505, 2020



This page is intentionally left blank